

- 1
- 2
- 3
- 4
- 5
- 6
- 7
- 8
- 9
- 10
- 11
- 12
- 13
- 14
- 15
- 16
- 17
- 18

MATERIAL

Aluminium, matte finish.
AISI 304 stainless steel screws and nuts.

STANDARD EXECUTIONS

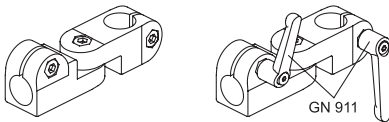
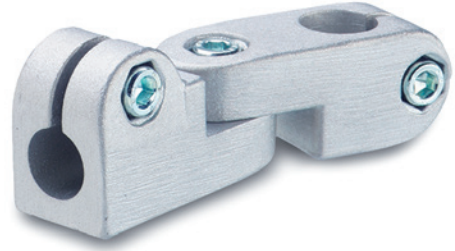
Surface finish index:
- **BL**: natural colour.
- **SW**: epoxy resin coating resistant to UV rays, RAL 9005 black colour.

FEATURES AND APPLICATIONS

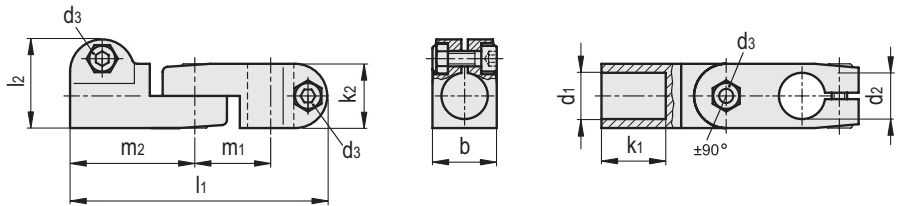
The assembly hole of GN 283 connecting clamps allows an excellent match with tubes GN 990 (see page 1368).
GN 283 connecting clamps are an assembly of connecting clamps GN 273 (see page 1343) and GN 275 (see page 1346).
The clamping screws d3 may be replaced by clamping kits GN 911 (see page 1372).

SPECIAL EXECUTIONS ON REQUEST

Different combinations of holes d1/d2.



Conversion Table	
1 mm = 0.039 inch	
d1	
mm	inch
12	0.47
14	0.55
16	0.63
18	0.71



GN 283-BL

METRIC

Code	Description	b	d1	d2	d3	k1	k2	l1	l2	m1	m2	d3 Clamping kit	⚖️
GN.61711	GN 283-B12-B12-2-BL	25	12	12	M6	25	25	100	34.5	29.5	48.5	GN 911-M6-22	156
GN.61731	GN 283-B14-B14-2-BL	25	14	14	M6	25	25	100	34.5	29.5	48.5	GN 911-M6-22	140
GN.61751	GN 283-B16-B16-2-BL	25	16	16	M6	25	25	100	34.5	29.5	48.5	GN 911-M6-22	135
GN.61771	GN 283-B18-B18-2-BL	25	18	18	M6	25	25	100	34.5	29.5	48.5	GN 911-M6-22	127

GN 283-SW

METRIC

Code	Description	b	d1	d2	d3	k1	k2	l1	l2	m1	m2	d3 Clamping kit	⚖️
GN.61716	GN 283-B12-B12-2-SW	25	12	12	M6	25	25	100	34.5	29.5	48.5	GN 911-M6-22	156
GN.61736	GN 283-B14-B14-2-SW	25	14	14	M6	25	25	100	34.5	29.5	48.5	GN 911-M6-22	140
GN.61756	GN 283-B16-B16-2-SW	25	16	16	M6	25	25	100	34.5	29.5	48.5	GN 911-M6-22	135
GN.61776	GN 283-B18-B18-2-SW	25	18	18	M6	25	25	100	34.5	29.5	48.5	GN 911-M6-22	127